

# TARAWERA – CONNECTING PEOPLE AND PLACE

Tarawera Lakes Collective Impact Project

## PHASE 1: SCOPING

Seeking the views of  
our lake communities

**"For change  
to be effective  
and lasting,  
it needs to  
be created with  
communities"**

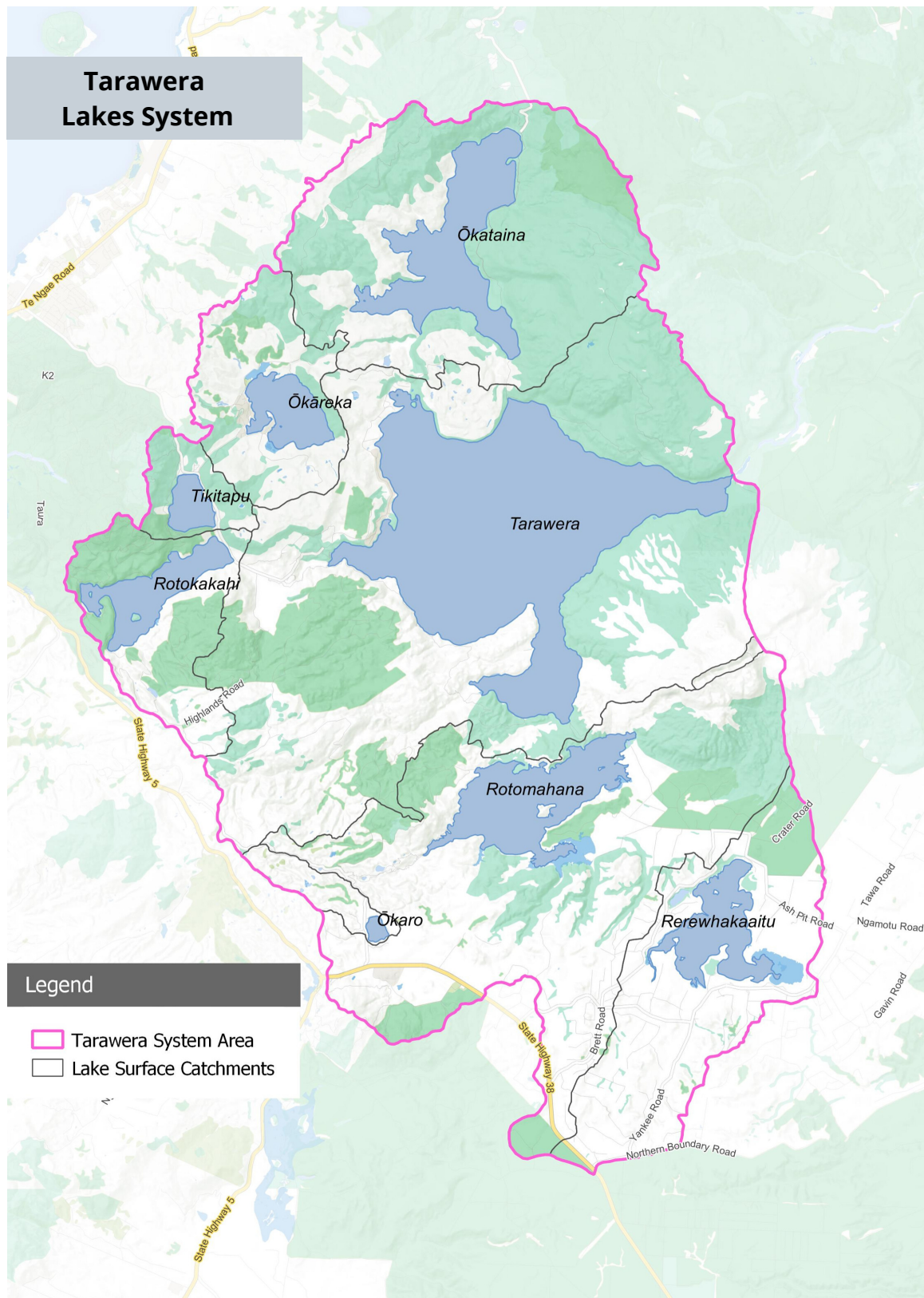
Lake Tarawera is one of the iconic lakes of the Rotorua District and of immense cultural and recreational significance. We know that the water quality in Lake Tarawera is declining and impacts from pest animals, particularly possums and wallabies, are increasing. We know that the health of Lake Tarawera is influenced by the health of seven contributing lakes. We also know that community groups want to take action, but require support, particularly resourcing.

### **What are the challenges?**

Our lakes are connected, but our agencies and communities are not as connected as they could be.

No single organisation can create large-scale and long term environmental or social change alone. Therefore, more can be achieved through collective impact, where groups, each with their own set of skills and experiences, are working together for a common purpose.

Photo courtesy of dubh, Flickr





## Why work collectively?

Research from New Zealand and overseas demonstrates that for change to be effective and lasting, it needs to be created with communities.

Collective impact brings together leaders and groups from different sectors to address complex social and environmental problems.

It is a way:

- of bringing together and harnessing the collective potential and energy of passionate people.
- of building on, not replacing, existing work happening within our catchments (e.g. pest control, water quality improvements).
- to enable innovation and multiple benefits of our collective action. This includes social and cultural outcomes.



## THE FIVE CONDITIONS OF COLLECTIVE IMPACT

### Common Agenda

There is a shared vision for change including a common understanding of the problem and a joint approach to solving it.

### Shared Measurement

Collecting data and measuring results ensures efforts remain aligned and participants hold each other accountable.

### Mutually Reinforcing Activities

Coordination of different but complementary activities that build on the work of each other and contribute to the common agenda.

### Continuous Communication

Consistent and open communication to build trust, assure mutual objectives and appreciate common motivation.

### Backbone Support

To coordinate participating organisations and agencies.



### **Linkage with the Rotorua Te Arawa Lakes Strategy Group**

We know that these efforts will contribute to the vision and goals outlined in the Lakes Strategy for the Rotorua district (refer right).

### **Who might be involved?**

Tangata whenua (hapū, iwi, Māori Land Trusts); Councils; Central Government Agencies; existing partnerships (e.g. Rotorua Te Arawa Lakes Strategy Group; Okataina Scenic Reserve Board); Lakes Water Quality Society; Residents, ratepayers and community groups; Farmers and foresters.

### **What is the role of Te Arawa Lakes Trust in this?**

Te Arawa Lakes Trust has been tasked with scoping out how collective impact might work – in practice – for the Tarawera Lakes System.

**“The lakes of the Rotorua district and their catchments are preserved and protected for the use and enjoyment of present and future generations, while recognising and providing for the traditional relationship of Te Arawa with their ancestral lakes.”**

**Vision and Strategy for the Lakes of the Rotorua District 2013**

### **What are the next steps?**

Our starting point is to understand the aspirations and efforts of those connected with each lake. This includes understanding:

- What projects are currently happening within the Tarawera Lakes System.
- What tangata whenua and local communities are keen to do or be involved in.
- How to remove the barriers that hinder effective collaboration.
- How to recognise and include a Maori perspective and context.
- How to maximise resources to effect transformational and lasting change.

From there, we will come up with, and test, ideas about how to effect community-led with a goal of having a proposed options by the end of June.

### **We want to hear from you**

We have set up an online survey for our communities to share their thoughts to guide way forward. This survey can be accessed at:

<https://talt.typeform.com/to/IQNxP0>.

If you have any questions, or wish to discuss further please email Elva Conroy on [elva@tearawa.iwi.nz](mailto:elva@tearawa.iwi.nz). We are happy to arrange zoom meetings if you are interested.

